

# The Living Stones

Page 1

Livingston Gem and Mineral Society

March 2022

## President's Message

"March is a tomboy with tousled hair, a mischievous smile, mud on her shoes and a laugh in her voice." – Hal Borland

Spring cleaning....moving along! The theme for our club going forward the next couple of months is cleaning up. It's out with the old, broken/un-used and creating a more organized space in the shop; where all members can find what they need and there is no questioning the function of an object. Membership **MUST** be current so please take notice. If you would like a locked drawer, please add your name to the list in the office. *Please see information on page 6 of this newsletter regarding the locked drawer decision.*

Big plans for this year as we start organizing a **POP-UP Show in Waterford** which will happen on Saturday, **May 21, 2022** (date is pending) at Christ Lutheran Church & **2022 Rockhound Dream Show September 17-18, 2022** inside the school! We will need **ALL hands on deck** to make the most of these two opportunities for our club.

**\*\*Update:** Celebration of Life for Zach's Dad, Dominic will be held at Cleary's Pub located at 117 E. Grand River Rd., Howell MI at 2 pm on Saturday, March 25, 2022.

The board voted unanimously to award a \$690 Scholarship to LaVonne, the Silversmith Representative, for continued education for our Train-the-Trainer Program. She will attend a 5 day workshop in April. Also.... Faceting Class with Dave Grimes has started again with limited spots. The class will be 4-6 weeks, 2 hours each session

**\*Dues for 2022 LGMS membership are \$65 with \$1 daily shop fee. They are considered late now. If you haven't paid, please add the \$5 locked drawer fee if you are using one. (One drawer per person)**

Remember to get your newly designed t-shirts for yourself and family and club decals for your car! T-shirts and decals can be purchased at the shop. (\$15-\$18 t-shirts) (Decals \$8)

General Membership meeting Tuesday, March 15 at the LGMS shop @ 6:00 pm. Please note the times/dates for ALL this year's Club meetings are posted in this newsletter. Please attend and support your club, so your voice may be heard! Remember, the shop will be closed at 5:45 pm on general membership meeting days.

February shop hours ---Tuesday thru Friday. Tues/Wed 10am-9pm, Thurs 10am-9pm (silversmiths only), and Friday 9am-4pm. Please stay well, my fellow members! You are all treasures! Contact info: [caricatures@comcast.net](mailto:caricatures@comcast.net) or cell phone 248-931-5999.

*Sincerely yours,  
Cari Jacob /President*



## **LGMS Board Meeting February 15, 2022, 1:00 pm**

### **Call to order: 1:06 pm**

- 1. Roll Call:** a total of 10 members including board members. Ed motioned to approve the minutes with no changes and Linda 2<sup>nd</sup>. Motion passed.

### **2. President & VP Report**

- A. Update: Celebration of Life for Zach's Dad, Dominic will be held at Cleary's Pub, 117 E. Grand River Rd., Howell MI at 2 pm on Saturday, March 25, 2022.
- B. Update on Bob's Donations: per Sharon she is upholding Bob's wishes not to have a funeral.
  1. So, LGMS would like to have a Celebration of Life Party for Bob when the weather permits and works with Sharon's schedule.
  2. LOOKING for VOLUNTEER to SNOWPLOW Bob's driveway.
  3. New Member Update: 3 trained on lapidary and 2 trained in silversmithing. Gained 5 members this month. Those with experience, PLEASE VOLUNTEER TO TRAIN NEW members. Contact a board member to sign up.

### **3. Silversmith Report – Per LaVonne:**

- A. Silversmith accounts are in good standing and had a focus on saving for tool box reimbursement & a magnetic pin tumbler.
- B. LaVonne cleaned out the long drawers under the shot tumblers and reorganized that area. Found slump glass products which used to be utilized at the shop. Bill and LaVonne will review items to see if they are sellable.
- C. Requested \$690 payment for a class so she may teach new techniques at the shop.
  1. Motion by Bill & 2<sup>nd</sup> by Cinda to give a scholarship to LaVonne, the Silversmith Representative, for continued education for our Train-the-Trainer Program. Vote taken and motion passed unanimously.

### **D. Faceting Class with Dave Grimes**

1. The Club has 4 set-ups with flat laps on the cart in the kitchen and plates need to be updated.
2. The class will be 4-6 weeks, 2 hours each session.

### **4. Treasurer's Report**

- A. Please pay your 2022 dues.
- B. The Club's 2022 January account status is in good standing with a positive balance.

### **5. Chairperson's Shop Report**

- A. **Pop-Up Show** in Waterford will happen on May 21, 2022 at Christ Lutheran Church. Vendors \$50 and LGMS & OCES \$25 per table.
- B. **September Show** will be held in the school on **September 17 & 18**. Waiting for updates of contracts, flyers and forms. Per Cinda, are we raising the cost per table? We need to get setup cost information. Lori to call table rental.
  1. We need DONATIONS for the Show Prizes and the Silent Auction Table to make money for the Club! IT IS NOT TOO EARLY TO START. DONATIONS INCLUDE: Rocks, Rock Books, Cabs, and anything rock related.

### **6. New Business**

- A. Cinda motioned and Jane 2<sup>nd</sup> that the Club is to Reimburse Big Bob's Family \$500. \$250 from the Silversmith account and \$250 from the LGMS account for purchase of his tools, a Kiln & Centrifugal Caster, provided that a signed agreement by both parties is completed. Vote taken and passed unanimously.
- B. Jim motioned and Bill 2<sup>nd</sup> That Lavonne is to be reimbursed \$135 for two Fordham quick disconnect hand pieces. Vote taken and passed.

### **7. PLEASE PAY YOUR 2022 DUES – in the shop or mail to Linda Sheedy.**

### **8. Adjournment 2:43 pm.** Motion 1<sup>st</sup> by Linda, 2<sup>nd</sup> by Jane. Motion passed.

### **Next GENERAL Meeting 3/15/22 at LGMS shop 6:00 pm**

Respectfully submitted  
Lori Irvin, Secretary

**Get your New LGMS T-Shirts  
Heartbeat design!  
Turquoise color!**

**Available at the shop!**

### ***Our Mission***

*The Livingston Gem and Mineral Society is a nonprofit organization and member of the Midwest Federation of Mineralogical Societies and the American Federation of Mineralogical Societies. Our purpose is to promote, through educational means, public interest and increased knowledge in the fields of mineralogy, archaeology, paleontology, and the lapidary arts.*

## **2022 Officers and Chairpersons**

**President:** Cari Jacob 248-931-5999

**Vice President:** Cinda Dawson 810-423-0464

**Secretary:** Lori Irvin, 810-820-0494

**Treasurer:** Linda Sheedy 248-425-9686

### **Second year Directors:**

Bill Magee 734-981-6117

Jane Lerma 517-438-6476

### **First year Directors:**

Janelle Gustafsen 248-420-1741

Jim Johnson 810-923-6113

### **Hospitality and Sunshine:**

Angela Hamilton 248-431-8288

Greyson Beckett 248-920-4913

### **Shop Chairpersons:**

Bill Magee 734-981-6117

**Newsletter:** Isla Mitchell, 248-685-7804,  
imvm.1@netzero.com

**Membership:** Cinda Dawson, 810- 423-0464

**Historian:** Chuck Amberger, 248-787-6586

**Library:** Bryant Hiiter, 248-210-6138

**Webmaster:** John Myer, [www.livingstongems.com](http://www.livingstongems.com)

Email: [LGMSMich@gmail.com](mailto:LGMSMich@gmail.com)

General Membership Meetings are held monthly on the 3<sup>rd</sup> Tuesday at 6 pm. (Except in January and February when board meetings are held in the shop.)

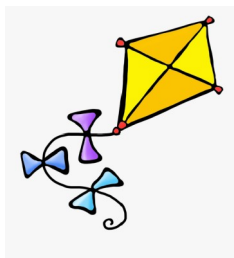


## **Winter Storm Trivia**

On the average, one inch of rain is equivalent to 10 inches of snow.

Wind chill is the combination of wind and temperature and is based on the rate of heat loss from exposed skin such as that of a person or animal. As the wind increases, heat is carried away from the body at an accelerated rate, driving the body temperature down. So wind chill has no effect on cars or other objects.

Hail is a chunk or stone of ice dropped from a thunderstorm. Sleet is frozen rain. Freezing rain is liquid rain that freezes to a surface such as the road or a tree.



**2022 LGMS BOARD AND GENERAL MEMBERSHIP MEETING DATES**

**Please be aware that during membership meetings  
the shop will be totally shut down.**

Month	2022 date	Time	Meeting type	Location	
1	1/25	1 pm	Board Meeting	LGMS shop	
2	2/15	1 pm	Board Meeting	LGMS shop	
3	3/15	6 pm	General Membership	LGMS shop	Shop shut down at 5:45
4	4/19	6 pm	General Membership	LGMS shop	Shop shut down at 5:45
5	5/17	6 pm	General Membership	LGMS shop	Shop shut down at 5:45
6	6/21	6 pm	General Membership	Hartland Park	
7	7/19	6 pm	General Membership	Hartland Park	
8	8/16	6 pm	General Membership	Hartland Park	
9	9/13	6 pm	General Membership	LGMS shop	Shop shut down at 5:45
10	10/18	6 pm	General Membership	LGMS shop	Shop shut down at 5:45
11	11/15	6 pm	General Membership	LGMS shop	Shop shut down at 5:45
12	12/12, 12/13, or 12/14	6 pm	General Membership and Holiday Party	Senior Center	Shop shut down at 5:45

**Last Call 2022 Dues are overdue now**

Please complete this form, tear off, and mail to  
Linda Sheedy, Treasurer, LGMS, 1582 Forest Bay Court, Wixom, MI 48393  
Contact Linda at 248-425-9686 if you prefer to use PayPal

**LGMS Membership Renewal 2022**

Last name \_\_\_\_\_ First name \_\_\_\_\_  
(please print)  
Address (City, State, Zip code) \_\_\_\_\_

Phone number (Area code) \_\_\_\_\_ Email address \_\_\_\_\_  
Hartland School District resident \_\_\_yes\_\_\_no\_\_\_ Newsletter preference: \_\_\_shop\_\_\_email\_\_\_

Adult membership(s) \_\_\_\_\_ x \$65.00 = \_\_\_\_\_  
Youth membership(s) (ages 13-17) \_\_\_\_\_ x \$25.00 = \_\_\_\_\_  
Total Payment \_\_\_\_\_

The club is much more interesting when you volunteer. In fact, the club really cannot function without volunteer help. Please mark the categories where you would like to contribute.

\_\_\_ Shop/Machine Maintenance \_\_\_ Field Trips \_\_\_ Membership  
\_\_\_ Publication/printing \_\_\_ Board position \_\_\_ Presenter  
\_\_\_ Website/internet \_\_\_ Newsletter \_\_\_ Education/4H  
\_\_\_ Auctions \_\_\_ Media/marketing \_\_\_ Hospitality



*George Pernicano Jr. 11/25/28 - 10/23/21*

George and Anna Pernicano came to us at the LGMS in the early 2000's. They brought with them a wide range of lapidary and wire wrapping skills which they had learned in their travels to the Southwestern states. They quickly became active members of our society and were eventually presented with our coveted Max Shultz Award for outstanding service.

George was born in Rossiter, Pennsylvania in 1928 and worked in Detroit as a Teamster in Cobo Hall. Anna was born in Dearborn, Michigan in 1929 and graduated from Fordson High School. She worked for the Bell Telephone Company until their children were born. George and Anna were married in 1951 and have two children: Pamela and Geoffery.

In 1977 they bought a motor home and began their travels out west. They became interested in minerals and in 1988 they bought into a retirement village. There they joined the Carriage Manor Wood and Rock Club where George learned the lapidary arts and Anna took up wire wrapping.

George especially loved to go on field trips and rock hunts in Arizona and in Michigan. He was an avid adventurer on these trips and was a ton of fun wherever he went.

George and Anna helped our club financially by being generous contributors of minerals and jewelry. In 2020 George and Anna received the American Federation Of Mineralogical Studies Scholarship Award! This came with a reception and they were able to select two students from an earth science graduate program to each receive a \$4000 scholarship.

George was a unique individual who will be always remembered fondly and always missed.

Respectfully submitted to the official record by  
Chuck Amberger, Club Historian

To all LGMS Members,

There are dozens of metal drawers in the workshop that are full of rocks that haven't been touched in years. Most of them do not have any identification, or have names of members who haven't been in the club for years. As they languish, most of them do not have working locks, or the keys are lost. Meanwhile, many dedicated, newer members have waited a year or more to obtain a drawer, since an empty one rarely appears.

Starting this year, 2022, LGMS will begin charging \$5 per year to house member's rocks/supplies in metal drawers. We will be repairing drawers with missing (or broken) locks at our cost of \$5 each. There are about 50 drawers that need new locks. (Club costs of \$250+) The \$5 fee is equivalent to 42 cents a month.

We have been working on cleaning these drawers up and have been notifying members by monthly newsletter, Facebook notices and with an email to all members. **We, as a club, do not own these lockers...they are the physical property of the school from which we are renting space. The drawers are limited, and a privilege. Unfortunately, we do not have enough for all our membership.**

So to summarize, these are the reasons for this change:

- 1) Security.
- 2) Uniformity of locks, and fairness of storage space for members.
- 2) Accessibility by a board member if a key is lost, or an owner disappears.
- 3) Drawers cannot be held in perpetuity by members who do not pay their dues on time.
- 4) Labeling to keep track of the renter's name.

The Board has decided to rectify the situation and has approved the following measures...

- 1- Drawers will be numbered, repaired (if needed) and identified by name tag.
- 2- There will be one drawer per person unless the member teaches classes regularly. Members may share a locked drawer, providing an extra key is given to LGMS office.
- 3- The office will keep one copy of the key, for emergencies only.
- 4- Unlabelled drawers will start to be emptied in March, the contents will be kept safe, and labeled until April 1st, at which time most locks will be repaired. Efforts will be made to contact the owner.
- 5- On April 1st, the contents of any unclaimed drawers become property of the club (unless previous arrangements have been made).
- 6- Only members in good standing may rent a drawer. Membership renewals are due by December 31st.
- 7- Members who do not renew by early January will be notified to remove the contents of their drawers. If they do not pay their dues within a month, then the drawer must be emptied.
- 8- If a member passes away or moves, and the contents have not been claimed by a family member within 3 months, then the contents will become property of the club.
- 9- If a member permanently loses a key, and a new one must be made, there will be a \$10 charge to make a new one.
- 10- As an incentive to entice members to volunteer for the board, a director and other frequent assignments (Silversmith representative, Shop Chair, Faceting teacher, Historian, etc); those members will be exempt from paying the locked drawer fee until their position has ended or they are not a member anymore.

So please take notice of your locker situation and decide either to clean out or relinquish the locker that you are using, or pay the yearly \$5 and keep the locked drawer you have been using. If you do not wish to pay the \$5, please clean out your drawer before April 1.

There will be some locker drawers available after the cleanup; please leave a request with a board member.

**Thank you, LGMS Board**



## Upcoming Events

March 5 and 6, 2022

### **The Roamin' Club's Auction**

Schoolcraft College, VistaTech Center  
18600 Haggerty Rd, Livonia, MI 48152  
Info: <http://roaminrockclub.weebly.com>

March 18, 19, 20, 2022

### **Michigan Gem and Mineral Society's Annual Show**

Keeley Park, 200 W. Ganson, Jackson, MI 49202  
Info: [info@www.mgmsrockclub.com](mailto:info@www.mgmsrockclub.com)  
or 517-522-3396

March 26, 2022

### **The Midwest Mineralogical and Lapidary Society's Metro Rock Swap**

St John's Lutheran Church,  
13115 Telegraph Road, Taylor, MI  
Info: 734-837-8920

April 7-9, 2022

### **Indian Mounds Rock & Mineral Club Annual Show**

Rogers Plaza Town Center, 972 28th St SW, Wyoming, MI 49509  
Info: Kreigh Tomaszuski, (616) 243-5951; [kreigh@gmail.com](mailto:kreigh@gmail.com); [www.indianmoundsrockclub.com](http://www.indianmoundsrockclub.com)



Livingston Gem and Mineral Society  
9525 E. Highland Road  
Howell, Michigan 48843-9098



*General Membership Meeting  
at the shop on  
March 15, 2022 at 6 pm*

Livingston Gem and Mineral Society was established in 1970. The annual membership fee is \$65.00 for adults and \$25.00 for youth ages 13-17. There is an additional fee of \$1.00 per day for workshop use. Annual dues and annual shop fees are due on January 1 of each year. The Livingston Gem and Mineral Society publishes The Living Stones. Non copyrighted articles may be reprinted provided that they are properly attributed. Newsletter deadline is the 20th of each month. Articles or correspondence can be sent to LGMS Hartland Consolidated Schools, 9525 E. Highland Rd. Howell, Michigan 48843-9098.